

FLAT TOP TOWER CRANE



Specifications:

- ▶ Max jib length: 55,00 m
- ▶ Capacity at max length: 8,15 t
- ▶ Max capacity: 24,00 t

WORKS FOR YOU.™

KEY

Zeichenerklärung · Légende · Leyenda · Legenda · Legenda · Условные обозначения



Hoisting · Heben · Levage · Elevación · Sollevamento · Elevação · Подъем



Trolleying · Katzfahren · Distribution · Distribución · Traslazione carrello · Distribuição · Передвижение каретки



Slewing · Schwenken · Orientation · Orientació · Rotazione · Giro · Поворот



Travelling · Schienenfahren · Translation · Traslación · Traslazione · Móvel · Передвижение



Directive on noise level · Richtlinie für den Schall-Leistungspegel · Directive sur le niveau acoustique · Directiva sobre el nivel acustico ·
Direttiva sul livello acustico · Diretiva sobre nível de ruídos · Директива по уровню шума



Consult us · Auf Anfrage · Nous consulter · Consultarnos · Consultateci · Consulte-nos · Проконсультироваться с нами



Power requirements · Geforderte Stromstärke · Puissance totale nécessaire · Potencia necesaria · Potenza totale richiesta ·
Requisitos de energia · Требования по питанию



Power supply · Stromversorgung · Alimentation · Alimentación · Alimentazione · Fonte de alimentação · Питание



In service · In Betrieb · En service · En servicio · In servizio · Em serviço · При работе



Out of service · Außer Betrieb · Hors service · Fuera de servicio · Fuori servizio · Fora de serviço · В режиме простоя



Max. under hook height · Höchste Hakenhöhe · Hauteur maxi. sous crochet · Maxima altura bajo gancho ·
Altezza max. sotto gancio · Alt. máx. sob o gancho · Макс высота крюка



Without load, without ballast, max. jib and max. height · Ohne Last und Ballast, mit Maximalausleger und Maximalhöhe ·
A vide, sans lest, avec flèche et hauteur maximum · Sin carga, sin lastre, con pluma y altura máxima · A vuoto, senza zavorra,
braccio max., altezza max. · Sem carga, sem lastro, lança máxima, altura máxima · Без груза, без балласта, на макс.
Длине вспомогательной стрелы и макс. Высоте



Counterweight · Gegengewicht · Lest de contre-flèche · Lastre de contra flecha · Zavorra controbraccio · Contrapeso ·
Противовес

C25

EN 14439-C25 out of service proof with LC1 & LC3 - wind coming from each side 100 Km/h - For different requirement please
contact us · EN 14439 - C25 außer Betrieb mit LC1 & LC3 - Wind von jeder Seite 100 km/h - für abweichende Anforderungen
kontaktieren Sie uns bitte · EN14439 - C25 hors service avec LC1 & LC3 - vent 100km/h de chaque côté - Nous contacter
pour des caractéristiques différentes · EN 14439 - C25 fuera de servicio con LC1 & LC3 - viento de cada lado 100 km/h -
contáctenos si necesita más información · EN 14439 - C25 fuori servizio con LC1 & LC 3 - vento in ogni direzione 100 km/h
- contattateci per differenti richieste · EN 14439 - C25 fora de serviço com LC1 e LC3 - vento de cada lado 100 kmh - para
pedidos especiais, entre em contato conosco · EN14439 - C25 не совместим с LC1 & LC3 - ветровая нагрузка не более
100км/ч - для уточнения спецификаций обращайтесь, пожалуйста, к нам

CONTENTS

CTT 541-24 S


Inhalt · Contenu · Contenido · Indice · Sumário · Содержание

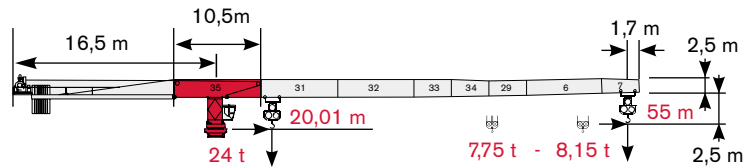
Page · Seite · Page · Página · Pagina · Página · Страница:


Load Diagram · Lastkurven · Courbes de charges · Curvas de cargas · Diagramma di portata · Diagrama de carga · Диаграмма грузоподъёмности	4
Tower · Turm · Tour · Torre · Torre · Torre · Башня.....	6
Mechanisms · Antriebe · Mécanismes · Mecanismos · Meccanismi · Mecanismo · Механизм	9
Transportation · Transport · Transport · Transporte · Trasporto · Transporte · Транспортировка.....	11


LOAD DIAGRAM

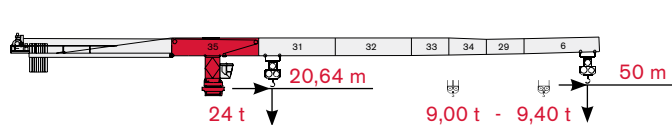
Lastkurven · Courbes de charges · Curvas de cargas · Diagramma di portata · Diagrama de carga · Диаграмма грузоподъёмности


	A1 (3,57 t)	D2 (5,30 t)
67 AFC 120	0	9




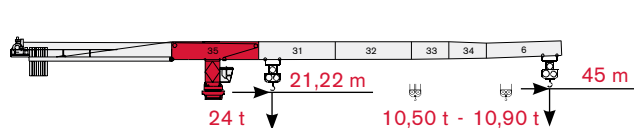
			10 m	15 m	20 m	25 m	30 m	35 m	40 m	45 m	50 m	55 m	
	12 t →	38,99 m	t	12,00	12,00	12,00	12,00	12,00	12,00	11,67	10,23	9,09	8,15
	12 t →	37,74 m	t	12,00	12,00	12,00	12,00	12,00	12,00	11,24	9,82	8,68	7,75
	24 t →	20,01 m	t	24,00	24,00	24,02	18,90	15,50	13,06	11,24	9,82	8,68	7,75


	A1 (3,57 t)	D2 (5,30 t)
67 AFC 120	0	9




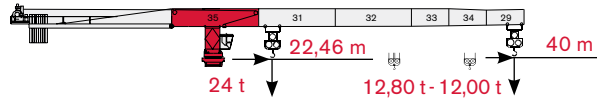
			10 m	15 m	20 m	25 m	30 m	35 m	40 m	45 m	50 m	
	12 t →	40,17 m	t	12,00	12,00	12,00	12,00	12,00	12,00	10,58	9,40	
	12 t →	38,93 m	t	12,00	12,00	12,00	12,00	12,00	12,00	11,64	10,17	9,00
	24 t →	20,64 m	t	24,00	24,00	24,00	19,55	16,03	13,52	11,64	10,17	9,00



	A1 (3,57 t)	D2 (5,30 t)
67 AFC 120	3	6




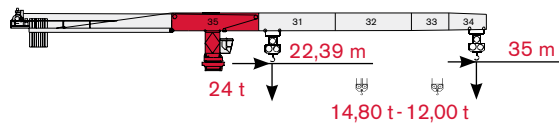
			10 m	15 m	20 m	25 m	30 m	35 m	40 m	45 m	
	12 t →	41,26 m	t	12,00	12,00	12,00	12,00	12,00	12,00	10,90	
	12 t →	40,02 m	t	12,00	12,00	12,00	12,00	12,00	12,00	10,50	
	24 t →	21,22 m	t	24,00	24,00	24,00	20,14	16,52	13,94	12,01	10,50


	A1 (3,57 t) D2 (5,30 t)
67 AFC 120	3 6




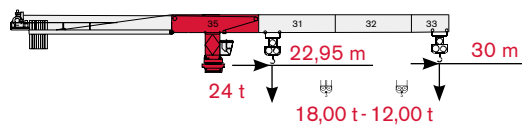
				10 m	15 m	20 m	25 m	30 m	35 m	40 m			
	12 t →	40,00 m	t	12,00	12,00	12,00	12,00	12,00	12,00	12,00			
	12 t →	40,00 m	t	12,00	12,00	12,00	12,00	12,00	12,00	12,00			
	24 t →	22,46 m	t	24,00	24,00	24,00	21,41	17,58	14,85	12,80			

	A1 (3,57 t) D2 (5,30 t)
67 AFC 120	3 6




				10 m	15 m	20 m	25 m	30 m	35 m				
	12 t →	35,00 m	t	12,00	12,00	12,00	12,00	12,00	12,00				
	12 t →	35,00 m	t	12,00	12,00	12,00	12,00	12,00	12,00				
	24 t →	22,39 m	t	24,00	24,00	24,00	21,34	17,52	14,80				

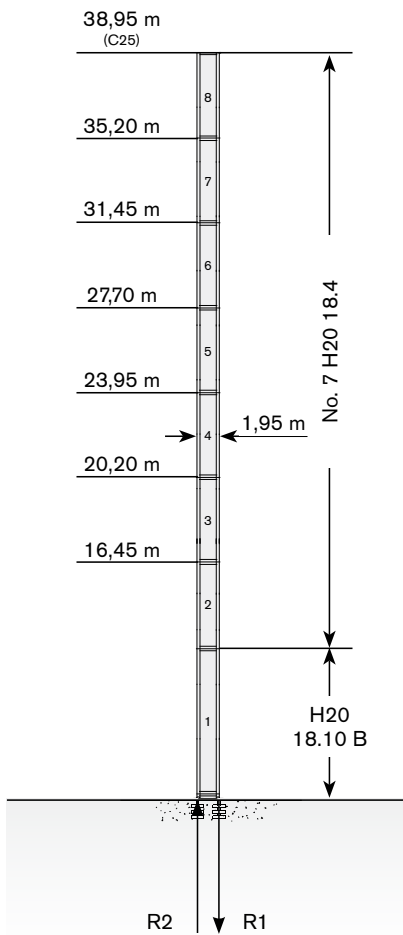
	A1 (3,57 t) D2 (5,30 t)
67 AFC 120	2 5



				10 m	15 m	20 m	25 m	30 m					
	12 t →	30,00 m	t	12,00	12,00	12,00	12,00	12,00					
	12 t →	30,00 m	t	12,00	12,00	12,00	12,00	12,00					
	24 t →	22,95 m	t	24,00	24,00	24,00	21,91	18,00					

Tower: H20 & Basement: R3

	●	◊
R1	-2730 kN	-2400 kN
R2	1900 kN	1760 kN
	900 kN	

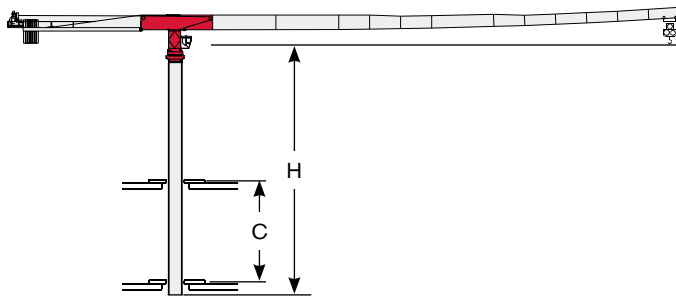


TOWER

Turn · Tour · Torre · Torre · Torre · Башня

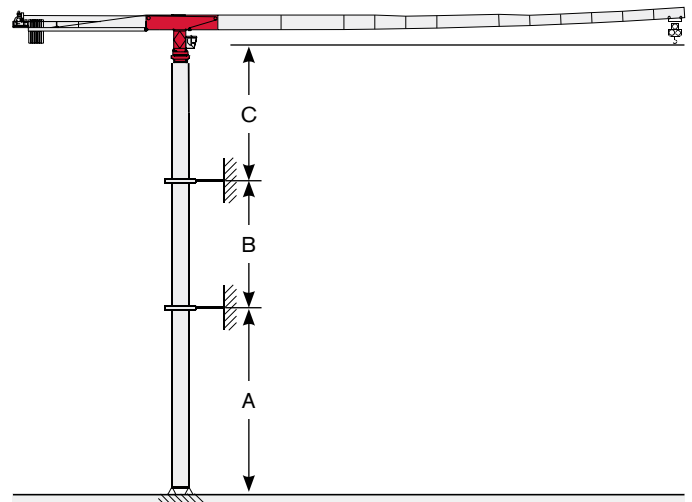
Other configurations · Aufstellmöglichkeiten · Autres Implantations ·
Otras Implantaciones · Altre Installazioni · Outras configurações ·
Другие конфигурации

Bottom climbing crane · Kletterkran im Gebäude · Télescope
sur dalles · Telescopage grúa trepadora · Gru climbing · Guindaste
automontante interno · Самоподъемный кран



Tower: H20		
Jib	C min/max	H
	i	

Crane tied to the structure · Geankerter Kran · Grue ancrée ·
Grúa anclada · Gru ancorata · Guindaste ancorado na estrutura ·
Кран, крепящийся к сооружению



Tower: H20 & Basement: R2		
	min	max
	i	






Different heights and tower combinations are available; please consult us · Andere Höhen und Turmkombinationen auf Anfrage ·
Différentes hauteurs et combinaisons de tour sont disponibles; nous consulter · Hay diferentes alturas y combinaciones de torre
disponibles. Consultenos · Altezze diverse e combinazioni di torre sono disponibili; consultateci · Diferentes alturas e combinações de
torres disponíveis; fale conosco · Возможны другие сочетания высоты и конфигурации башни; проконсультируйтесь с нами

MECHANISMS

CTT 541-24 S




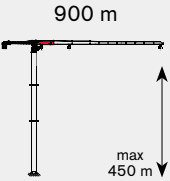

Antriebe · Mécanismes · Mecanismos · Meccanismi · Mecanismo · Механизм

Power supply · Stromversorgung · Alimentation · Suministro eléctrico · Alimentazione · Requisitos de energia · Требования по питанию

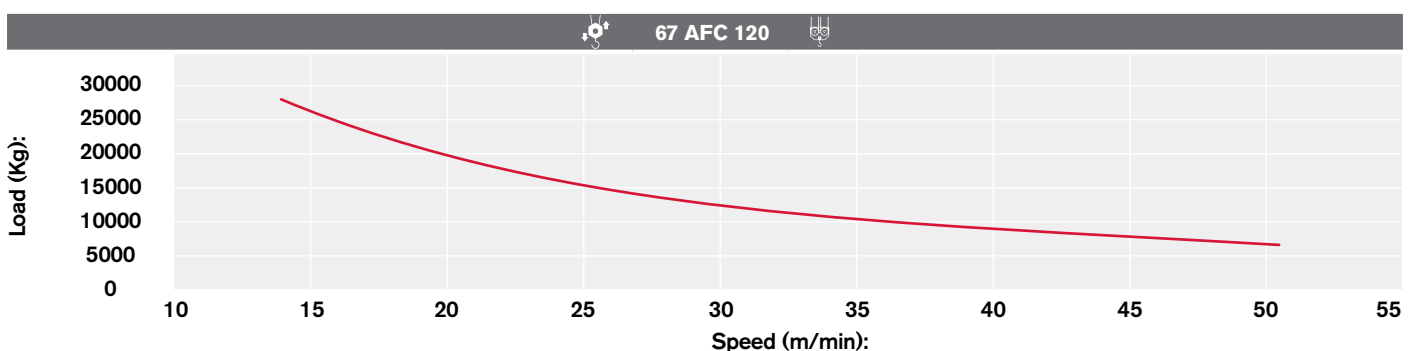
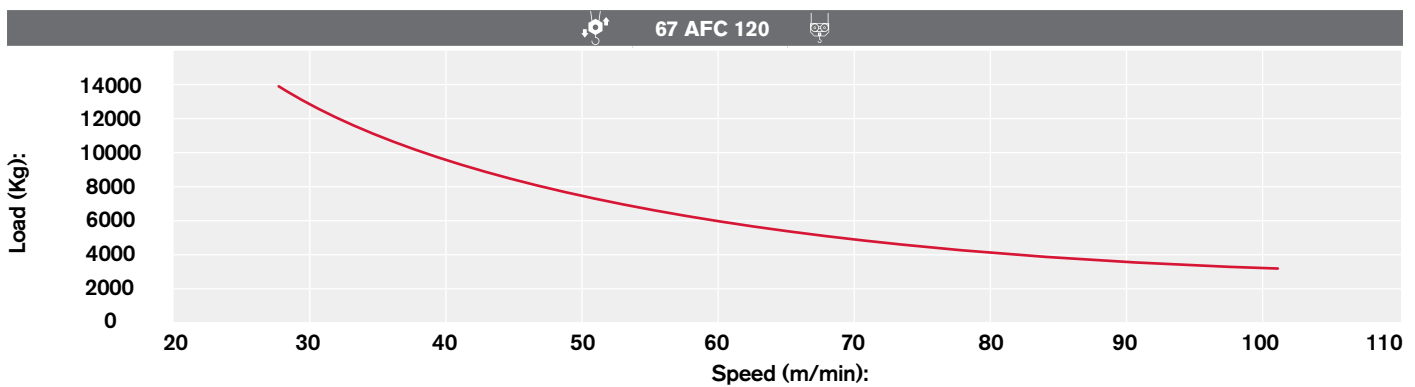
	67 AFC 120		155 kVA*		400V - 50Hz / 460V - 60Hz		2000/14/CE modificata
---	------------	---	----------	---	---------------------------	---	-----------------------

* Average consumption · Durchschnittsverbrauch · Consommation moyenne · Consumo medio · Consumo medio · Consumo médio · Среднее потребление

Hoisting · Heben · Levage · Elevación · Sollevamento · Elevação · Подъем

			t	m/min	kW		
	67 AFC 120		12	0 → 28	67		900 m max 450 m
			8	0 → 41			
			6	0 → 54			
			4	0 → 77			
			3	0 → 100			
			24	0 → 14			
			16	0 → 21			
			12	0 → 27			
			8	0 → 39			
			6	0 → 50			



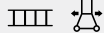
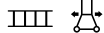
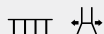
Hoisting Speed · Heben Geschwindigkeit · Vitesse de Levage · Velocidad de Elevación · Velocità di Sollevamento · Velocidade de içamento · Скорость подъема



MECHANISMS

Antriebe · Mécanismes · Mecanismos · Meccanismi · Mecanismo · Механизм

Additional Specifications · Weitere Leistungsdaten · Spécifications additionnelles · Otras prestaciones · Altre movimentazioni · Especificações adicionais · Дополнительные спецификации

	DVF 3 15 D4	0 → 99 m/min	15 kW
	SCC 2 2 132 LC	0,75 r.p.m.	2 x 18,8 kW
	TVF 2RG 4M9 D1	0 → 24 m/min	4 x 9 kW
	TSR 2RG 4M8	12 → 24 m/min (50 Hz) 14 → 28 m/min (60 Hz)	4 x 80 Nm
	TSR 4RG 4M8	12 → 24 m/min (50 Hz) 14 → 28 m/min (60 Hz)	4 x 80 Nm

Tower height max.

	T1	T2	T2 C25
			



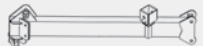



TRANSPORTATION

CTT 541-24 S

Transport · Transport · Transporte · Trasporto · Transporte · Транспортировка

Packing list

Undercarriage






CTT 541S-24	DESCRIPTION · BESCHREIBUNG · DESCRIPTION · DESCRIPCIÓN · DESCRIZIONE · DESCRIÇÃO · ОПИСАНИЕ	LENGTH · LÄNGE · LONGUEUR · LONGITUD · LUNGHEZZA · COMPRIMENTO · ДЛИНА	WIDTH · BREITE · LARGEUR · ANCHURA · LARGHEZZA · LARGURA · ШИРИНА	HEIGHT · HÖHE · HAUTEUR · ALTURA · ALTEZZA · ALTURA · ВЫСОТА	QUANTITY · MENGE · QUANTITÉ · CANTIDAD · QUANTITÀ · QUANTIDADE · КОЛИЧЕСТВО	WEIGHT · GEWICHT · POIDS · PESO · PESO · ВЕС
	STRUT MOUNTING TOWER SECTION H20 18.8TA FOR 6x6 m UNDERCARRIAGE	7,50 m	2,30 m	2,30 m	1	6660 kg*
	6x6 m UNDERCARRIAGE LONG BEAM	8,95 m	0,50 m	1,05 m	1	2088 kg
	6x6 m UNDERCARRIAGE SHORT BEAM	4,4 m	0,5 m	1,05 m	2	1010 kg
	6x6 m UNDERCARRIAGE JOINING SLEEPER	5,5 m	0,15 m	0,48 m	2	280 kg
	6x6 m UNDERCARRIAGE JOINING SLEEPER	5,5 m	0,15 m	0,48 m	2	220 kg
	6x6 m UNDERCARRIAGE STRUT	5,10 m	0,24 m	0,30 m	4	500 kg

TRANSPORTATION



Transport · Transport · Transporte · Trasporto · Transporte · Транспортировка

Packing list

Tower

CTT 541S-24	DESCRIPTION · BESCHREIBUNG · DESCRIPTION · DESCRIPCIÓN · DESCRIZIONE · DESCRIÇÃO · ОПИСАНИЕ	LENGTH · LÄNGE · LONGUEUR · LONGITUD · LUNGHEZZA · COMPRIMENTO · ДЛИНА	WIDTH · BREITE · LARGEUR · ANCHURA · LARGHEZZA · LARGURA · ШИРИНА	HEIGHT · HÖHE · HAUTEUR · ALTURA · ALTEZZA · ALTURA · ВЫСОТА	QUANTITY · MENGE · QUANTITÉ · CANTIDAD · CANTITÀ · QUANTIDADE · КОЛИЧЕСТВО	WEIGHT · GEWICHT · POIDS · PESO · PESO · ВЕС
	H20 18.10 B TOWER SECTION	10,0 m	2,00 m	1,95 m	1	7000 kg*
	H20 18.4 TOWER SECTION	3,75 m	2,00 m	1,95 m	1	2955 kg*
	H20 18.10 BASE	10,40 m	2,01 m	2,01 m	1	7800 kg
	H20 18.10 SPECIAL	10,35 m	2,01 m	2,01 m	1	7815 kg
	SLEWING UNIT	3,00 m	2,30 m	2,40 m	1	10450 kg

Cab

CTT 541S-24						
	CAB EVO 15	4,80 m	1,80 m	2,40 m	1	1852 kg
	CAB SECTION	3,60 m	2,00 m	2,00 m	1	2650 kg


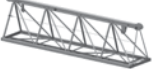
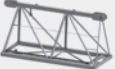








* inclusive of ladders, platforms and assembly equipment

TRANSPORTATION

CTT 541-24 S

Transport · Transport · Transporte · Trasporto · Transporte · Транспортировка




Upper Part

CTT 541S-24	DESCRIPTION · BESCHREIBUNG · DESCRIPTION · DESCRIPCIÓN · DESCRIZIONE · DESCRIÇÃO · ОПИСАНИЕ	LENGTH · LÄNGE · LONGUEUR · LONGITUD · LUNGHEZZA · COMPRIMENTO · ДЛИНА	WIDTH · BREITE · LARGEUR · ANCHURA · LARGHEZZA · LARGURA · ШИРИНА	HEIGHT · HÖHE · HAUTEUR · ALTURA · ALTEZZA · ALTURA · ВЫСОТА	QUANTITY · MENGE · QUANTITÉ · CANTIDAD · CANTITÀ · QUANTIDADE · КОЛИЧЕСТВО	WEIGHT · GEWICHT · POIDS · PESO · PESO · ВЕС
	JIB SECTION - 35 TT19 25.10	10,5 m	2,20 m	2,60 m	1	9000 kg
	JIB SECTION - 31 TT19 23.06	10,5 m	1,90 m	2,50 m	1	4700 kg
	JIB SECTION - 32 TT19 23.10	10,00 m	1,90 m	2,50 m	1	3750 kg
	JIB SECTION - 33 TT19 23.05	5,00 m	1,90 m	2,50 m	1	1750 kg
	JIB SECTION - 34 TT19 23.05	5,00 m	1,90 m	2,50 m	1	1615 kg
	JIB SECTION - 29 TT19 20.05	5,00 m	1,90 m	2,30 m	1	1532 kg
	JIB SECTION - 06 TT19 20.10	10,30 m	1,90 m	2,20 m	1	1915 kg
	JIB SECTION - 07	5,20 m	1,90 m	2,1 m	1	877 kg
	JIB POINT	2,10 m	1,20 m	1,60 m	1	340 kg
	TROLLEY	2,40 m	2,30 m	1,50 m	1	672 kg
	HOIST BLOCK UNIT	1,60 m	0.60 m	1,70 m	1	845 kg max

TRANSPORTATION

Transport · Transport · Transporte · Trasporto · Transporte · Транспортировка

Upper Part

CTT 541S-24	DESCRIPTION · BESCHREIBUNG · DESCRIPTION · DESCRIPCIÓN · DESCRIZIONE · DESCRIÇÃO · ОПИСАНИЕ	LENGTH · LÄNGE · LONGUEUR · LONGITUD · LUNGHEZZA · COMPRIMENTO · ДЛИНА	WIDTH · BREITE · LARGEUR · ANCHURA · LARGHEZZA · LARGURA · ШИРИНА	HEIGHT · HÖHE · HAUTEUR · ALTURA · ALTEZZA · ALTURA · ВЫСОТА	QUANTITY · MENGE · QUANTITÉ · CANTIDAD · QUANTITÀ · QUANTIDADE · КОЛИЧЕСТВО	WEIGHT · GEWICHT · POIDS · PESO · PESO · ВЕС
	COUNTER JIB	9,80 m	2,10 m	2,30 m	1	3865 kg
	COUNTER JIB WINCH 67 AFC 120	3,70 m	2,20 m	2,50 m	1	6100 kg
	COUNTER JIB PLATFORMS UNIT	3,50 m	0,80 m	0,40 m	1	782 kg

Effective Date: March 2017.

Product specifications and prices are subject to change without notice or obligation. The photographs and/or drawings in this document are for illustrative purposes only. Refer to the appropriate Operator's Manual for instructions on the proper use of this equipment. Failure to follow the appropriate Operator's Manual when using our equipment or to otherwise act irresponsibly may result in serious injury or death. The only warranty applicable to our equipment is the standard written warranty applicable to the particular product and sale and Terex makes no other warranty, express or implied. Products and services listed may be trademarks, service marks or trade-names of Terex Corporation and/or its subsidiaries in the USA and other countries. All rights are reserved. Terex® is a registered trademark of Terex Corporation in the USA and many other countries.

Gültig ab: März 2017.

Produktbeschreibungen und Preise können jederzeit und ohne Verpflichtung zur Ankündigung geändert werden. Die in diesem Dokument enthaltenen Fotos und/oder Zeichnungen dienen rein anschaulichen Zwecken. Anweisungen zur ordnungsgemäßen Verwendung dieser Ausrüstung entnehmen Sie bitte dem zugehörigen Betriebshandbuch. Nichtbefolgung des Betriebshandbuchs bei der Verwendung unserer Produkte oder anderweitig fahrlässiges Verhalten kann zu schwerwiegenden Verletzungen oder Tod führen. Für dieses Produkt wird ausschließlich die entsprechende, schriftlich niedergelegte Standardgarantie gewährt. Terex leistet keinerlei darüber hinaus gehende Garantie, weder ausdrücklich noch stillschweigend. Die Bezeichnungen der aufgeführten Produkte und Leistungen sind gegebenenfalls Marken, Servicemarken oder Handelsnamen der Terex Corporation und/oder ihrer Tochtergesellschaften in den USA und anderen Ländern. Alle Rechte vorbehalten. „TEREX“ ist eine eingetragene Marke der Terex Corporation in den USA und vielen anderen Ländern.

Date d'effet: Mars 2017.

Les spécifications et prix des produits sont sujets à modification sans avis ou obligation. Les photographies et/ou dessins contenus dans ce documents sont uniquement pour illustration. Veuillez vous référer à la notice d'utilisation appropriée pour les instructions quant à l'utilisation correcte de cet équipement. Tout manquement au suivi de la notice d'utilisation appropriée lors de l'utilisation de notre équipement ou tout acte autrement irresponsable peut résulter en blessure corporelle sérieuse ou mortelle. La seule garantie applicable à notre équipement est la garantie standard écrite applicable à un produit et à une vente spécifique. Terex n'offre aucune autre garantie, expresse ou implicite. Les produits et services proposés peuvent être des marques de fabrique, des marques de service ou des appellations commerciales de Terex Corporation et/ou ses filiales aux Etats Unis et dans les autres pays, et tous les droits sont réservés. «TEREX» est une marque déposée de Terex Corporation aux Etats Unis et dans de nombreux autres pays.

Fecha efectiva: Marzo 2017.

Los precios y las especificaciones de productos pueden sufrir cambios sin aviso previo u obligación. Las fotografías o dibujos de este documento tienen un fin meramente ilustrativo. Consulte el manual de instrucciones del operador correspondiente para más información sobre el uso correcto de este equipo. El hecho de no respetar el manual del operador correspondiente al utilizar el equipo o actuar de forma irresponsable puede suponer lesiones graves o fatales. La única garantía aplicable a nuestro equipo es la garantía escrita estándar correspondiente a cada producto y venta, y TEREX no amplía dicha garantía de forma expresa o implícita. Los productos y servicios mencionados pueden ser marcas registradas, marcas de servicio o nombres de marca de TEREX Corporation o de sus filiales en Estados Unidos de América y otros países, y se reservan todos los derechos. „TEREX“ es una marca comercial registrada de Terex Corporation en Estados Unidos de América y muchos otros países.

Data di inizio validità: Marzo 2017.

Ci riserviamo il diritto di modificare le specifiche e i prezzi dei prodotti in ogni momento e senza preavviso. Le fotografie e/o i disegni contenuti in questo documento sono destinati unicamente a scopi illustrativi. Consultare le istruzioni sull'uso corretto di questo macchinario, contenute nell'opportuno Manuale dell'operatore. L'inottemperanza delle istruzioni contenute nel Manuale dell'operatore del macchinario e altri comportamenti irresponsabili possono provocare gravi lesioni, anche mortali. L'unica garanzia applicabile ai nostri macchinari è la garanzia scritta standard applicabile al particolare prodotto e alla particolare vendita; Terex è esonerata dal fornire qualsiasi altra garanzia, esplicita o implicita. I prodotti e servizi elencati possono essere dei marchi di fabbrica, marchi di servizio o nomi commerciali di TEREX Corporation e/o società affiliate negli Stati Uniti d'America e altre nazioni e tutti i diritti sono riservati. „TEREX“ è un marchio registrato di Terex Corporation negli USA e molti altri Paesi.

Data de vigência: Março 2017.

Especificações e preços dos produtos sujeitos a alteração sem aviso prévio ou obrigações. As fotografias e/ou desenhos deste documento servem apenas para fins ilustrativos. Consulte o respectivo Manual de Instruções para instruções sobre o uso correto deste equipamento. A falta de atenção ao respectivo Manual do Operador no uso de nosso equipamento ou a operação da máquina em condições impróprias pode resultar em lesão grave ou morte. A única garantia aplicável aos nossos equipamentos é a garantia padrão por escrito, aplicável ao produto específico e à sua venda, sem que nenhuma outra, expressa ou implícita, seja oferecida pela Terex. Os produtos e serviços listados podem ser marcas comerciais, marcas de serviço ou nomes-fantasia da Terex Corporation e/ou suas subsidiárias nos EUA e em outros países. Todos os direitos reservados. Terex® é marca registrada da Terex Corporation nos EUA e muitos outros países.

Вступает в силу: март 2017.

Технические характеристики и цены могут изменяться без предварительного уведомления и без каких-либо обязательств для производителя. Фотографии и (или) чертежи, использованные в документе, приведены исключительно в качестве иллюстраций. Инструкции по правилам эксплуатации даются в соответствующих руководствах для операторов данного оборудования. Невыполнение рекомендаций руководства по эксплуатации нашего оборудования или другие безответственные действия могут повлечь серьезные травмы или смерть. Единственной гарантией, действующей в отношении нашего оборудования, является стандартная форма письменной гарантии на данный тип оборудования и на условия его продажи.



Copyright 2017 Terex Corporation

Terex Cranes, Global Marketing, Dinglerstraße 24, 66482 Zweibrücken, Germany
Tel. +49 (0) 6332 830, Email: info.cranes@terex.com, www.terexcranes.com

Brochure Reference: TC-DS-M-E/F/G/I/S/P/R-CTT 541-24 S-03/17

www.terexcranes.com



WORKS FOR YOU.™